

Alberta  
Water Research Institute

**Evidence Informed Public Policy?**

Lorne Taylor Ph. D.  
Chair, Alberta Water Research Institute

Presented to  
R.T.N.A. Conference  
October 2007

ALBERTA WATER  
RESEARCH INSTITUTE  
water  
AN INGENUITY INSTITUTE

[www.waterinstitute.ca](http://www.waterinstitute.ca)

---

---

---

---

---

---

---

---

Alberta  
Water Research Institute

**Introduction**

- Why the question mark (?) in the title ?
- Ideas have consequences
- Conditions for consequences

ALBERTA WATER  
RESEARCH INSTITUTE  
water  
AN INGENUITY INSTITUTE

[www.waterinstitute.ca](http://www.waterinstitute.ca)

---

---

---

---

---

---

---

---

Alberta  
Water Research Institute

**Understanding Government (Public Policy Decision Makers) and its context for change.**

- Drivers of change
  - Public policy agenda
  - AMHB research agenda

ALBERTA WATER  
RESEARCH INSTITUTE  
water  
AN INGENUITY INSTITUTE

[www.waterinstitute.ca](http://www.waterinstitute.ca)

---

---

---

---

---

---

---

---

Alberta  
Water Research Institute

### Can Science inform Public Policy?

Science Community	Public Policy Decision Makers
<ul style="list-style-type: none"> <li>➤ Values</li> <li>➤ Skills set</li> <li>➤ Knowledge</li> <li>➤ Culture</li> <li>➤ Vocabulary</li> <li>➤ What is important vs. what is not</li> </ul>	<ul style="list-style-type: none"> <li>➤ Values</li> <li>➤ Skills set</li> <li>➤ Knowledge</li> <li>➤ Culture</li> <li>➤ Vocabulary</li> <li>➤ What is important vs. what is not</li> </ul>

[www.waterinstitute.ca](http://www.waterinstitute.ca)




---

---

---

---

---

---

---

---

---


---

Alberta  
Water Research Institute

### The Process

1. Cabinet task
2. Transparent
3. Public Outreach and consultation
4. Initial success
5. Long Term

[www.waterinstitute.ca](http://www.waterinstitute.ca)




---

---

---

---

---

---

---

---

---

---

Alberta  
Water Research Institute

### Knowledge Translation

1. Evidence must inform Public Policy
2. Credible Broker
3. Ideas not data
4. Solution orientated

[www.waterinstitute.ca](http://www.waterinstitute.ca)




---

---

---

---

---

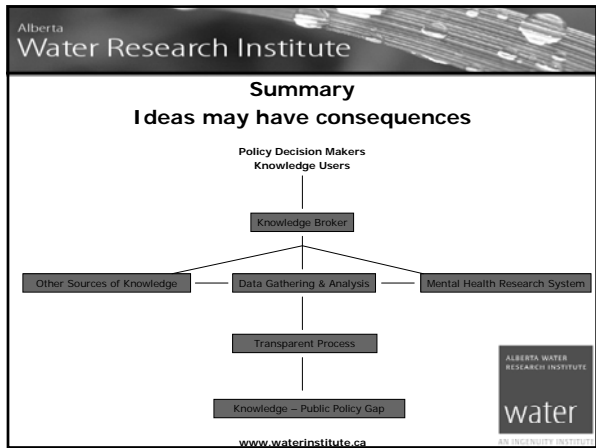
---

---

---

---

---



---

---

---

---

---

---

---

---